

**MARITIME CHAMBER OF COMMERCE
ISKENDERUN**

Ref : 26-ISK/-L-183
Subject : Regarding IMO Label Applications

09.02.2026

Dear Business Partners,

In order to increase efficiency and accelerate the operational processes of containers entering or discharging into our port, our application procedures regarding old IMO (Dangerous Goods) labels on containers have been updated.

The new application, which will be valid as of February 10, 2026, is specified in the attachment.

LİMAK İSKENDERUN ULUSLARARASI
LİMAN İŞLETMECİLİĞİ A.Ş.
Akdeniz V.D. 608 053 41 03
İSKENDERUN

Kubilay GÜRBÜZ
Deputy General Manager

Gündüz ARISOY
General Manager

Distribution Request:

Deniz Ticaret Odası Başkanlığı - İskenderun
Ticaret ve Sanayi Odası Başkanlığı - İskenderun
Deniz Nakliyeciler Derneği - İskenderun
Mersin Gümrük Müşavirleri Derneği - Mersin

Information:

Liman Başkanlığı - İskenderun
TCDD Liman İşletme Kontrol Müdürlüğü - İskenderun

Attachment: IMO Label Applications (2 Pages)

1. Evaluation Criteria. The principle of “legibility” has been introduced for old IMO labels found on full or empty containers. Accordingly;

- The Class Number, UN Number, Color, or Visual Symbols on the label must be fully or partially visible or legible.
- In cases where the labels have been covered with paint, if the IMO symbol, color or number is still distinguishable, the container will be considered "IMO labeled/defective" and will be subject to penalty.

2. Procedures to be applied to defective containers. Identified as defective according to the above criteria;

- Full Containers: Containers will be immediately transported to an isolated area within the port area. After confirmation from the relevant agency, the containers will be stacked accordingly. The IMO Label Fee, Label Removal Fee, and Terminal Shifting Costs arising from this procedure will be charged to the relevant agency.
- Empty Containers: Containers will be identified at the time of discharge or at the gate in, and after the label removal process is completed, the containers will be taken to the stacking area. The IMO Label Fee and Label Removal Fee will be charged for the containers to the relevant agency. For discharged containers, the label removal process will take place after the containers are transported to a separate area. Therefore, Terminal Shifting Cost will be charged additionally for discharged containers to the relevant agency.

3. Exemptions and Liability Limits. In order to avoid slowing the operational flow;

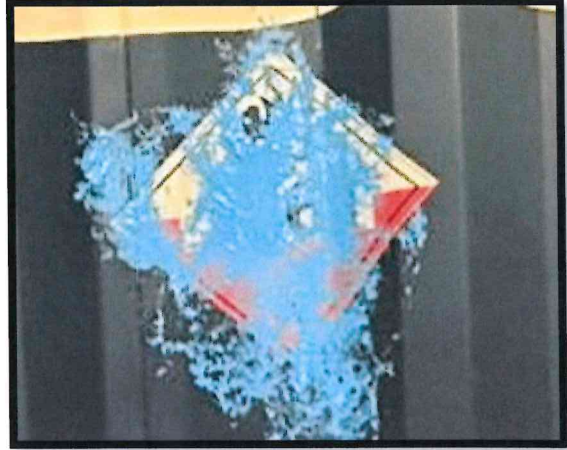
- If only the adhesive/Label Residue remains,
- If its visual integrity is damaged (torn/erased) and the number, color, or symbol is not visible,
- If the label is completely covered with paint and rendered unreadable, no notification will be made to the agent for label residues, and no penalty fee or additional cost will be charged.

Important Note: Our port will not be responsible for any possible penalties and expenses that may arise at the ports of arrival or during subsequent shipments for containers that fall within the scope of exemption.

We kindly request that you organize your information and operational processes accordingly.

Best regards,

IMO Label Residues to be Regarded as Legible:



IMO Label Residues to be Regarded as Illegible:

